



Sustainability is not an option, it is a necessity.  
Electrification is a huge opportunity and a chance to do things better.  
Electric propulsion is silent and enhances the boating experience to a new level.

## Teamwork

Naval architects/Design:

Alfred & Johan Spijkerman (NL),  
Willem Nieland (NL),  
Emre (TR)

Partner:

Moondag Yachts (TR)

Propellor design:

Marin, Blokland (NL)

Structural design and CE:

Solico Engineering (NL)

Battery systems:

CATL (CN)

Control/display:

AyeAye Systems (NL)

## GreenPower 33 Open – fully Electric

What if, there was a boat that was not only fast & luxurious but also quite and sustainable?

What if, there was a boat that doesn't slam on waves but cuts through and skims over them?

GreenPower Boats redefines the limits and combines all desired aspects in one beautiful design. 33 feet of pure innovation, plenty of range, space & luxury made possible by innovation.





## Join the Green Tidal Wave

For long, fossil power was cheap & abundant, and no one cared about the noise. Those days are gone.

Efficiency is key, when we want to make use of clean and quite electric power. The GreenPower 33 has a unique wavepiercing hydrofoil supported hull. Together with lightweight & robust materials the drag has been reduced with more than 50% or doubling the range.





## Passion, Persistence & Teamwork

Alfred & Johan Spijkerman, father & son. Both driven by passion for water sport.

Alfred has been a senior designer and inspirator for many naval companies and has led several challenging internationally oriented projects.

Alfred is driven by perfection and innovation is the key to make things happen. Complex projects are only possible by teamwork. Keeping everyone on track and inspiring is his strength.



## Passion, Persistence & Teamwork

Johan is a hardcore product developer, a hard worker with magic hands.

His ideas have often been so refreshing, sometimes simple and so effective. Excellence comes in many ways.

The new hull has been tested with many prototypes. Prototypes are hard. For Johan, it is often a breeze.

Johan helps to inspire others, such as our suppliers. Couldn't do it without him.



## Fast & Silent sailing

What is it about boating? What makes it so appealing to go out for a beautiful day on the water?

Is it just the sea doing its magic? A new environment or...maybe, just maybe, it has to do with interacting with friends.

But how can we enjoy the beauty of spending valuable time with friends, when the combustion engines are roaring loud? Wouldn't then be all communication almost impossible? Stopping at a beautiful spot or an interesting town is certainly an option. But why waste this beautiful opportunity while also enjoying the splashing of the water and your favourite music to brighten up your day.

With the GreenPower 33, this is no longer a dream, but a reality. Real range and real speed, silent and sustainable.

But there is more..

How often is a beautiful but windy day spoiled as the waves are too high to make a comfortable ride possible? Instead of bouncing and slamming on waves it cuts through them. Enjoy your favourite drink, while cruising at 20 knots!





## Hydrofoil supported Catamaran

Innovation requires persistence and resourcefulness.

CFD provides a basis, but experiments tell the real story. It has been a journey of 5 years of discovery, failure and in the end: victory.

The hydrofoil lifts the boat partly out of the water, dramatically reducing drag. As part of our no-nonsense approach, we did not want active foils. Our special stern, creates hydrodynamic lift and provides stability and an optimal base for a traditional but high efficiency propellor.

The design is so unique and efficient that a patent application has been filed. We strongly believe, the future of fast electric boating is here.



## Elegance, Beauty & Soul

Throughout our history of building hand-crafted, top quality leisure boats we have always believed that a boat should have a distinctive and individual character, built to the highest standards and be exhilarating to own. Moonday has always stood for fine, elegant boats, designed and produced by skilled craftsmen. There is a special place in the hearts of owners for boats which conform to this ideal. These are boats which bring to life the freedom and enjoyment of open waters.

Every Moonday is very much a product of today's technology. In preparation for the production of the boats, the new factories at Tuzla, Istanbul, invested in a total refurbishment that included an all-new assembly line with new resources and new investment in the latest computer aided design ensuring that for Moonday, the future is every bit as bright as its illustrious past.



1946 / Istanbul



1948 / Manchester



1951 / Istanbul



1946 / Istanbul

### SINCE 1956, NOW IN 6500 m<sup>2</sup>

Boat Building, Yacht Accessories Ship  
Chandellery Custom Boat Production  
for Different Brands Inhouse  
Engineering / Design / Architecture  
Model Production with Own CNC  
Machinery Mould Production Repair -  
Winterstorage Pultrusion Production  
Production of Various Composite  
Parts

### ALL WORK IS DONE UNDER ONE ROOF..

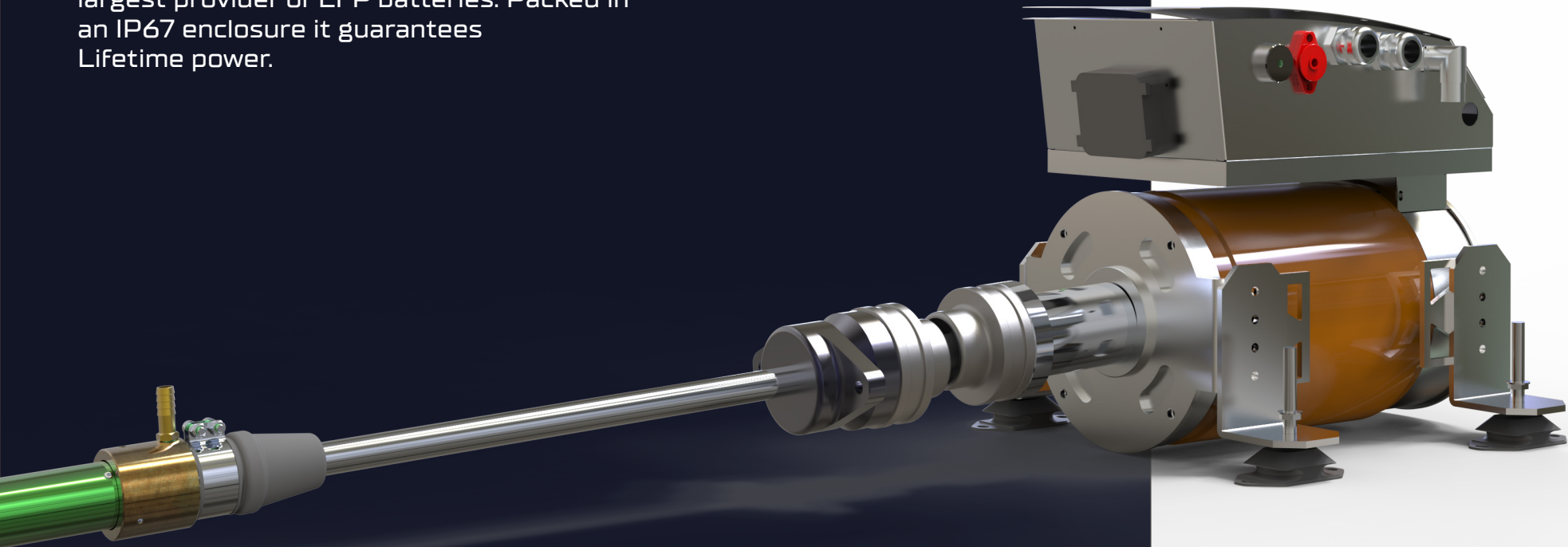
Carpentry - Furniture Workshop,  
Cushions - Tent Production, Metal  
/ Stainless Steel / Aluminium  
Workshop, Electricity Cabeling  
Workshop, Piping Workshop, Glass  
Workshop, Paint Workshop, GRP  
Workshop, Cnc Cutting Workshop,  
Engine - Mechanics Workshop,  
Installation & Assembly Workshop.

## High Quality Components & High-end suppliers

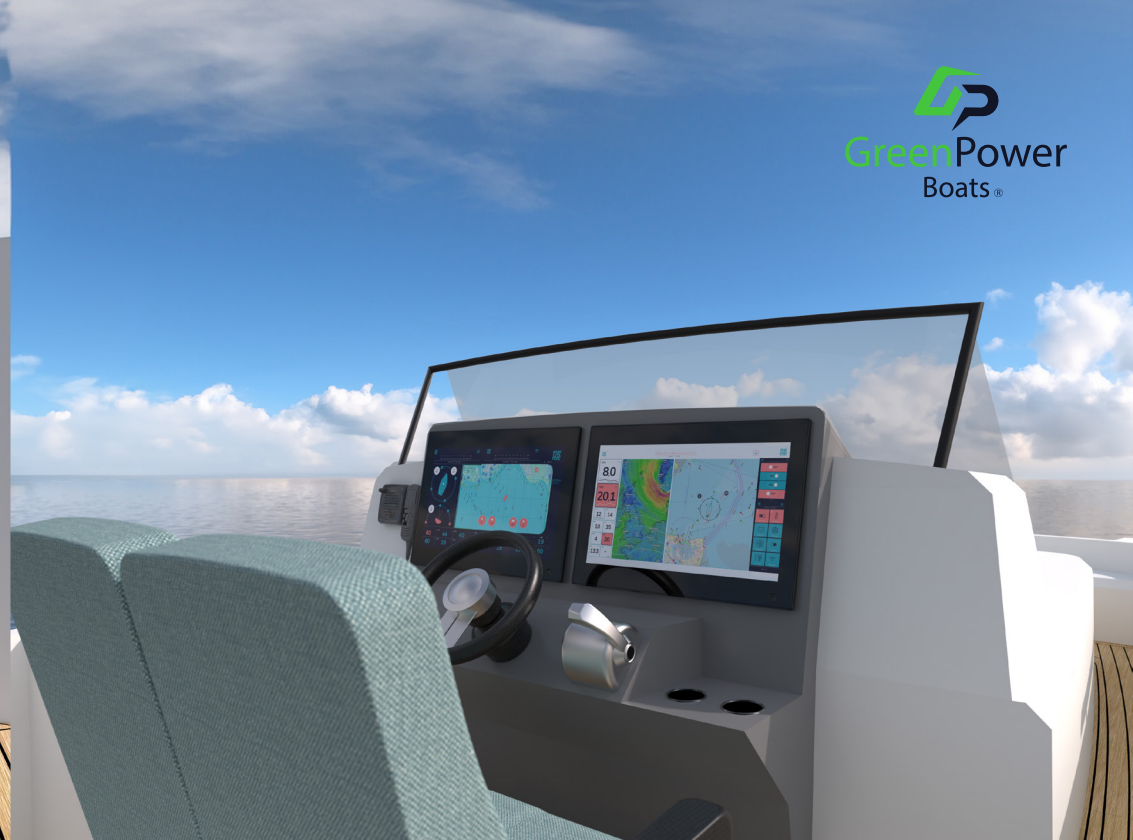
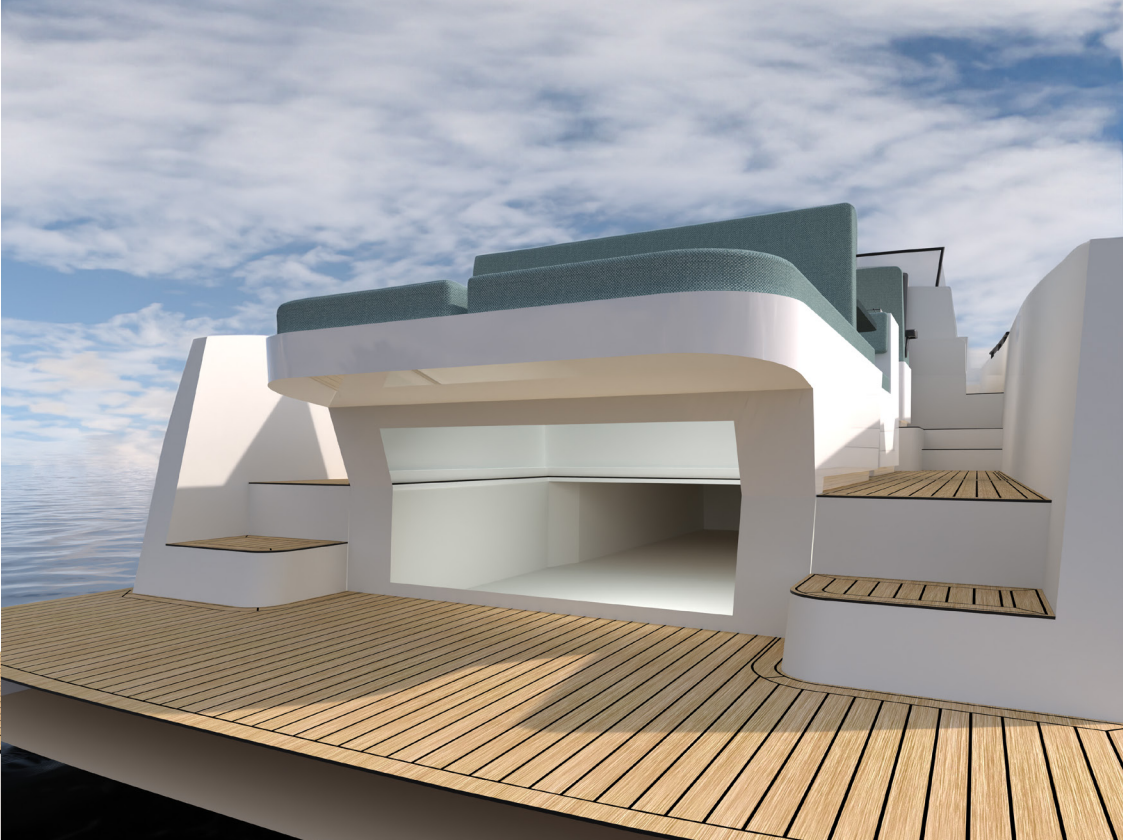
Efficiency is about all components. Our stern provides hydrodynamic lifting surfaces, which help to reduce the drag, but the high pressure also results in optimal inflow conditions for the propellor. Efficiency comes in many ways.

2 high-end, closed-circuit water cooled 80 kW continuous Power electric motors provide virtually maintenance free power, making top speeds of 22 knots possible.

The battery tech is from CATL, the world's largest provider of LFP batteries. Packed in an IP67 enclosure it guarantees Lifetime power.







## Space to relax

The GreenPower 33 is a boat with much more space than you would expect.

Firstly, the complete drive train with the batteries are stored out of sight in each hull. Instead of 2 hot and noisy big engines at the rear, there is a spacious swim platform.

In the aft section you can relax or enjoy a beautiful meal at the dining table with space for 6 people. In the mid- section there is a sink, two fridges and you can even make your own meal if you want.

## ..and more space

2 seats for the captain with excellent view and control to all systems. An integral system with two 22" touch screens provides access to all functions.

A monohull would then create less and less width to the front, but this catamaran design has the entire width available. A large lounge bed with a perfect front facing view. And in the very front, near the anchor, there is even more room for 2 or 3 people to sit and have one of those quality conversations. Personal storage for a day trip can easily be stowed away underneath the seats.



## Storage of big items

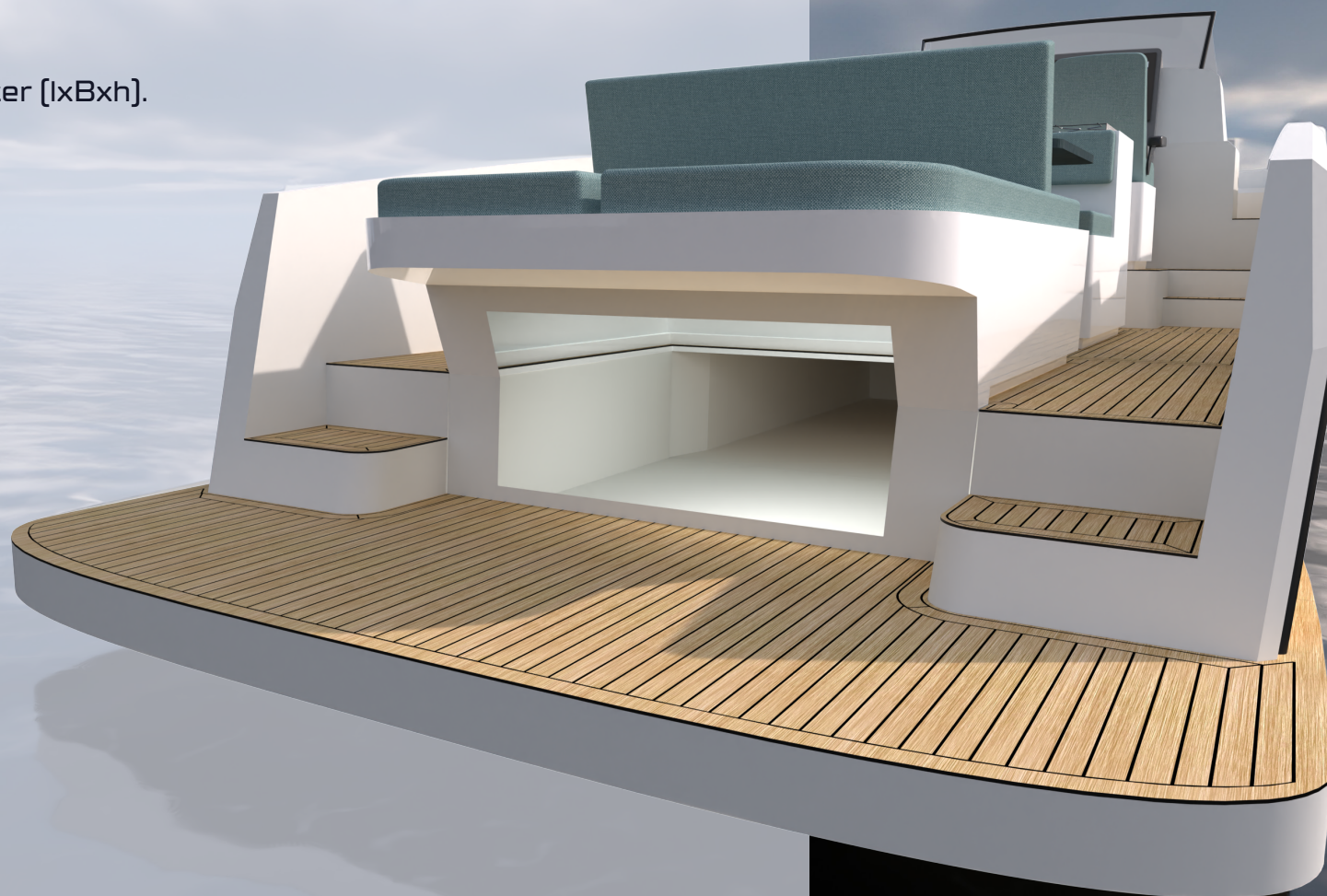
You may have experienced it yourself, but storage is always a problem.

Some want to bring a 4-meter SUP board, others want to go fishing, an electric step, a wake board, water ski's, a buggy for the baby, you name it. There is so much to explore and so little time.

The main storage is  
150 x 160 x 80 cm or 1920 liter (lxBxh).

Furthermore, there is  
room for long items up to  
4 meter with  
a maximum height of 33 cm  
and 160 cm wide.

So bring your SUP  
Boards, fishing rods,  
water ski's and what more.





## GreenPower Hotel

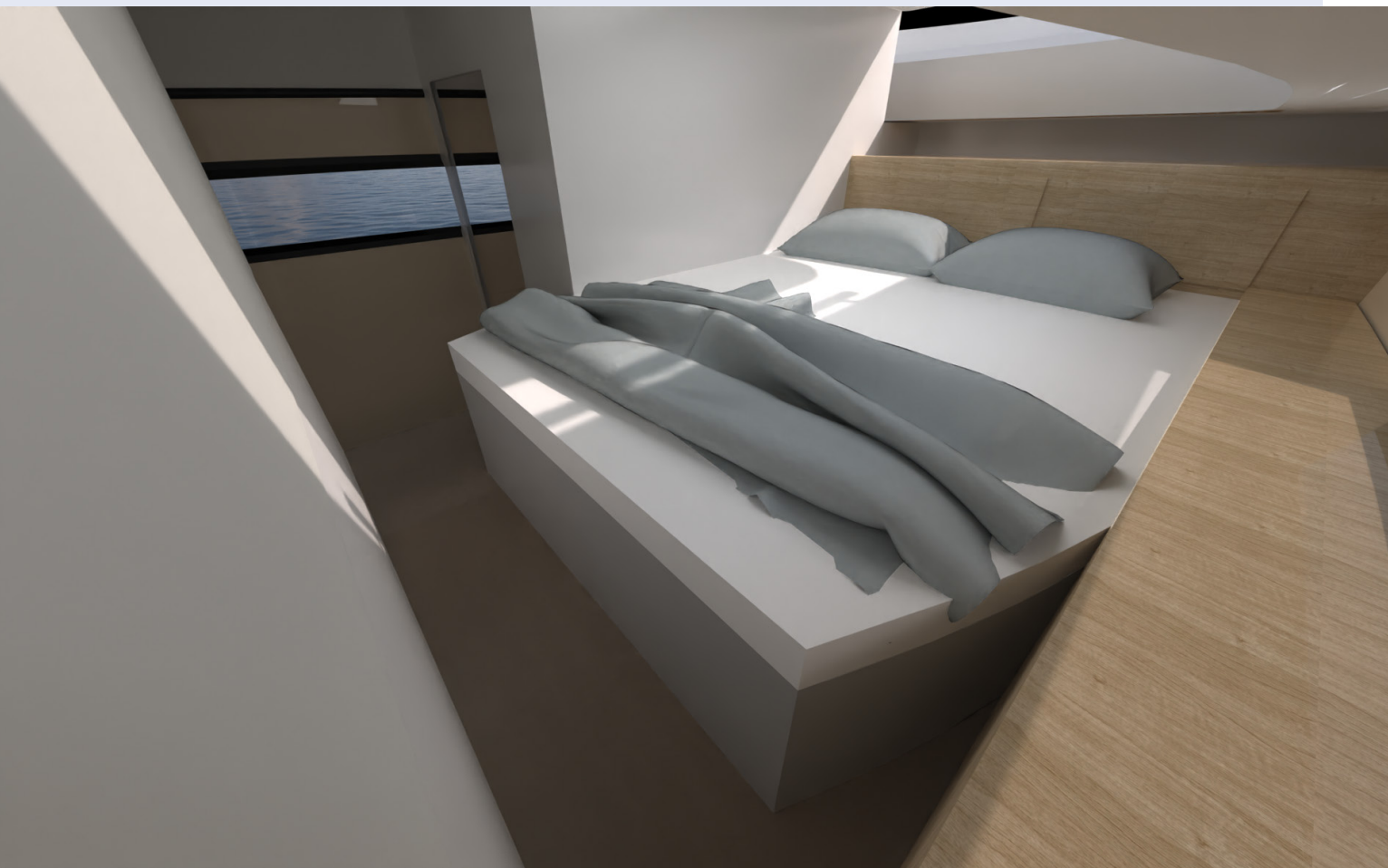
A boat is there to provide you a good time on the water, build memories with friends. How about spending the night in a beautiful environment.

During the day, there is lots of space for sunbathing, dining & swimming.

The GreenPower 33 provides you with a spacious bathroom with lots of headroom and a well-designed bedroom with all the storage area you need for your personal items.

Start your day with a refreshing shower and meet at the deck for fresh coffee.





## Bedroom

Sleeping on boats of about 33 feet is mostly a challenge. The GreenPower 33 has a 150 cm wide and comfortable bed.

When you enter the bedroom, you can stand upright as the cockpit creates the headroom. Enough personal storage and you can easily sit up right without bumping your head against the ceiling.

This is not just a weekend-boat, you can easily spend longer holidays here.

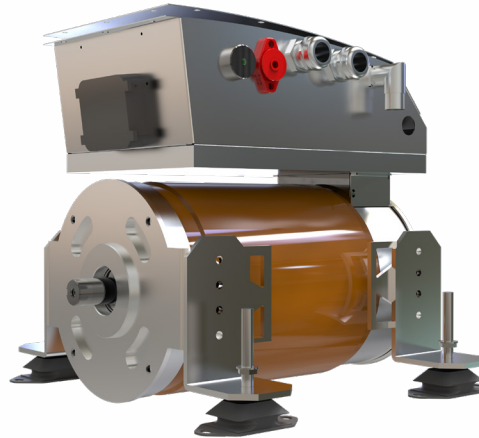
## Let's talk about money Private owner

Fast electric boating by Greenpower is the smart option. As a bonus on the unique Silence on the yacht, the price to maintain and to recharge are much lower in comparison with traditional loud and maintenance sensitive gas-powered engines.

Just spend time on the water with friends, don't spend it on fuel, maintenance and depreciation.

The batteries are good for 4000 cycles, with 40 cruising days a year, the batteries last for 100 Years!

The electric motors are Synchronous Reluctance Internal magnet type (similar to Tesla). Superior efficiency and durability, which can easily last 10k hours.



Professional owner	Greenpower 33		Comparable Outboard yacht	
Boating days/year	40	days/year	40	days/year
Average cruising day	80	kwh	2.5	hours
Provided by the sun	0	kwh	50.6	lph
Charging/fuel	80	kwh	126.5	liters
Average price/kwh	€ 0.20	euro/kwh	€ 1.80	euro/liter
Energy cost for average day boating	€ 16		€ 228	
Energy per year	€ 640	per year	€ 9108	per year
Maintenance per year	€ 50	per year	€ 3000	per year
Depreciation per year [8%]	€ 9027	8%	€ 8462	16%
Total costs per year	€ 9717	per year	€ 20570	per year
	Profit	€ 10854		
		per year		



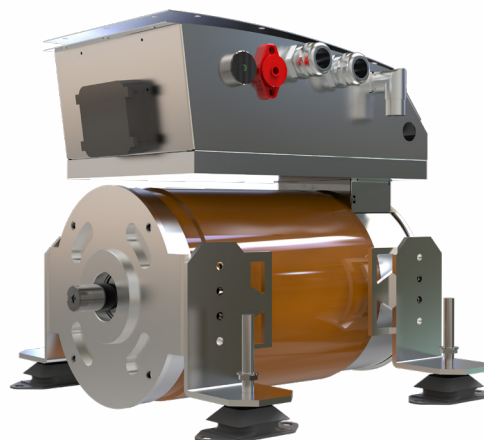
## Professional owner/ charter company

For charter companies, Fast electric boating by Greenpower is a no-brainer. You can offer your clients superior silence and comfort and as a bonus the price to maintain and to recharge are much lower in comparison with traditional loud and maintenance sensitive gas-powered engines.

Extremely low in maintenance and depreciation, just rent-out and get happy customers as a reward.

The batteries are good for 4000 cycles, with 150 cruising days a year, the batteries last for 27 Years!

The electric motors are Synchronous Reluctance Internal magnet type [similar to Tesla]. Superior efficiency and durability, which can easily last 10k hours.



Professional owner	Greenpower 33		Comparable Outboard yacht	
Boating days/year	150	days/year	150	days/year
Average cruising day	80	kwh	2.5	hours
Provided by the sun	0	kwh	50.6	lph
Charging/fuel	80	kwh	126.5	liters
Average price/kwh	€ 0.20	euro/kwh	€ 1.80	euro/liter
Energy cost for average day boating	€ 16		€ 228	
Energy per year	€ 2 400	per year	€ 34155	per year
Maintenance per year	€ 50	per year	€ 3000	per year
Depreciation per year [8%]	€ 10 155	9%	€ 10 578	20%
Total costs per year	€ 12 605	per year	€ 47 733	per year
	Profit	€ 35 128		
		per year		



## Speed, Range & Charging

We simply need range for a comfortable experience on the water. To get to our destinations of our choice we need speed too. With the GreenPower 33 you get both.

You can choose from 3 battery packs, which result in 40–80 NM of range without compromising speed. In the rare case, you would need even more range, you could slow down a bit to 9–10 knots, which more than doubles your range.

Charge overnight at your favourite port. A standard 2 or 3 phase 380 VAC plug is sufficient to get you back on track. Even standard 230 VAC is sufficient and can help you out for the next day. Future models will provide solar cells to extend the range even further. Expected may 2024.

		Battery Pack			Battery Pack		
		132 kWh	176 kWh	220 kWh	132 kWh	176 kWh	220 kWh
Vel [km/h]	Vel [knots]	Range-1 [km]	Range-2 [km]	Range-3 [km]	Range-1 [NM]	Range-2 [NM]	Range-3 [NM]
13	7	178	237	296	96	128	160
15	8	197	263	329	107	142	178
19	10	111	148	185	60	80	100
21	11	84	112	140	45	61	76
21	12	65	87	109	36	47	59
24	13	69	92	115	37	50	62
26	14	72	96	120	39	52	65
28	15	74	99	124	40	54	67
30	16	76	102	128	42	55	69
32	17	78	104	130	42	57	71
33	18	80	105	132	43	57	71
35	19	80	106	132	43	57	42
37	20	63	84	105	34	46	57
39	21	57	76	95	31	41	51
42	23	45	60	76	25	33	41
44	24	43	58	72	23	31	39



## Specifications

Length	10 [meter]
Beam	3 [meter]
Draught	0.85 [meter]
Class	B
Propulsion	Electric
Battery Options	132, 176 or 220 [kWH]
Charging	20 [kW]
Charging Plugs	Standard Marina plug 380 VAC, 230 VAC
Charging time [overnight]	6.5h, 9h, 10h
Continuous Power	2x80 [kW]
Roll & Pitch stabilization	Zipwake
Display	2 x 22" Full HD, touchscreen, high brightness
Control system	AyeAye systems [Garmin option]
Max. Persons	12
Cabin	1
Berth	2
Main Storage	1920 [liter]
Storage long items	400 x 160 x 33 cm
Fresh water	200 [liter]
Grey water	100 [liter]
Black water	50 [liter]
Hardtop	Optional
Layout	To be discussed
Cabin version	Available soon





## CONTACT

Alfred Spijkerman [founder]

🌐 [www.GreenPowerBoats.nl](http://www.GreenPowerBoats.nl)

✉ [Info@GreenPowerBoats.nl](mailto:Info@GreenPowerBoats.nl)

☎ +31 (6) 20 41 80 94